



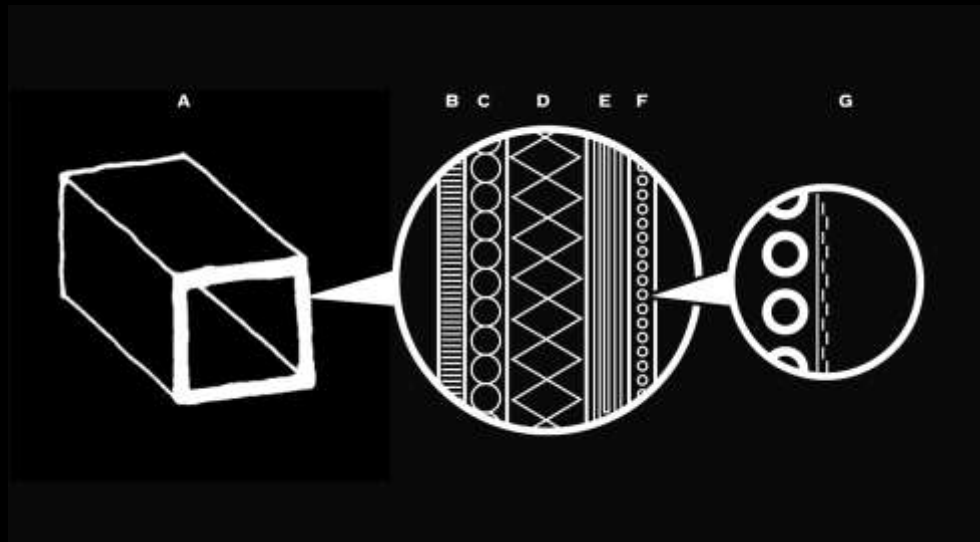
BAU KUNST ERFINDEN

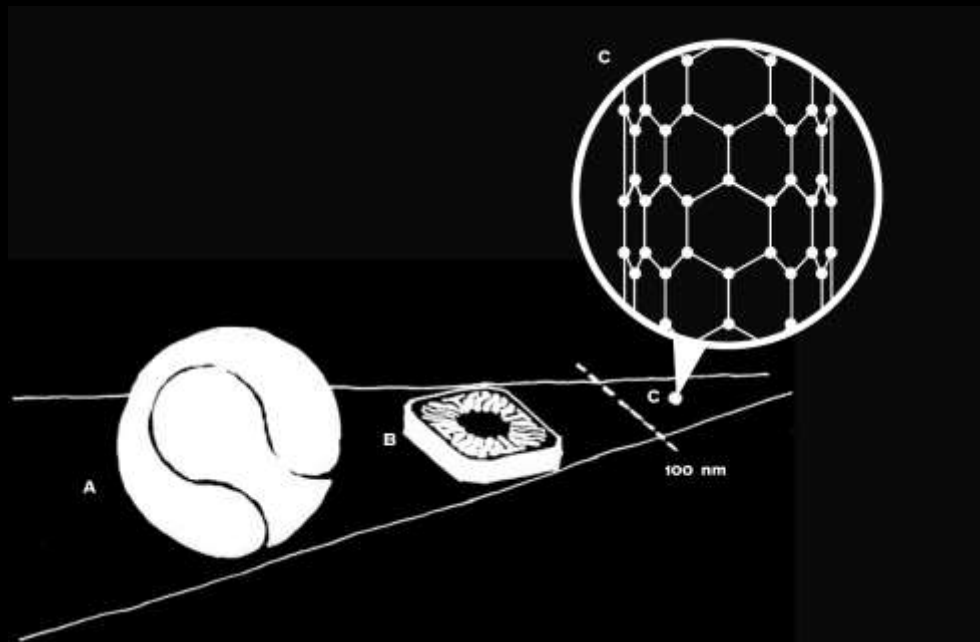
Forschungsplattform für experimentelle Materialentwicklung
am FB Architektur der Universität Kassel

Prof. Heike Klussmann / Dipl. Ing.–Arch. Thorsten Klooster

DYSCRETE -

Sonnenstrom aus Beton







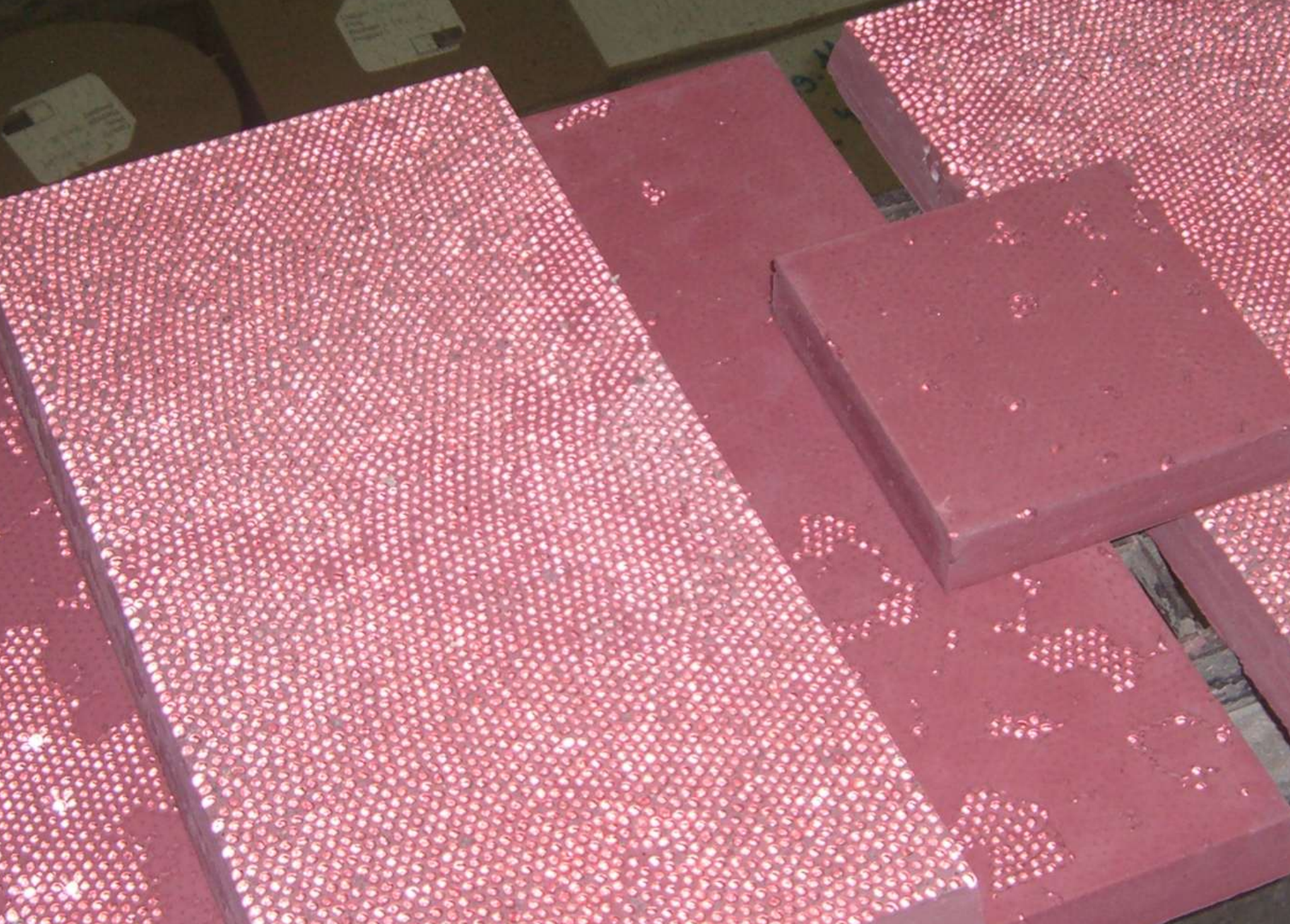






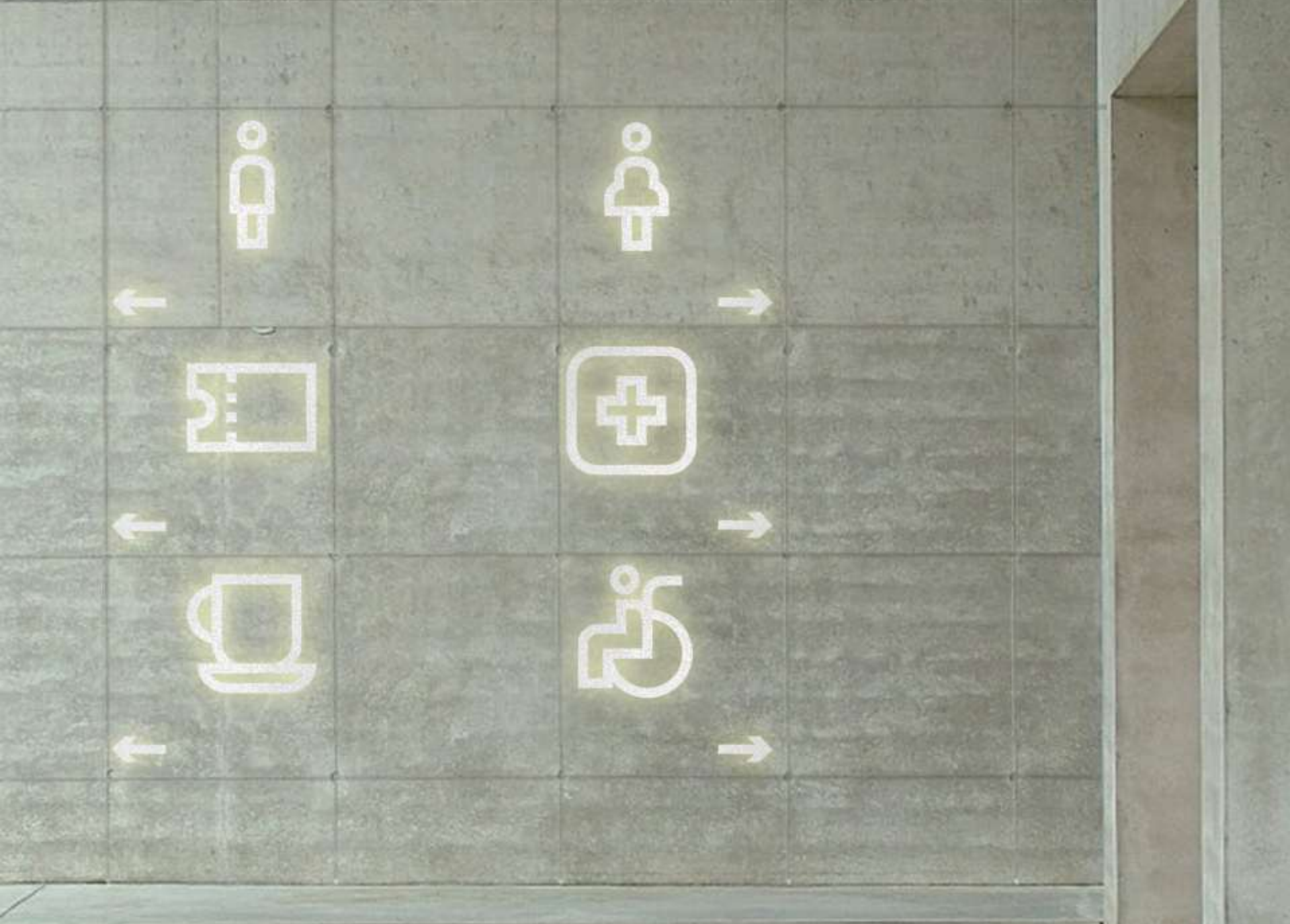


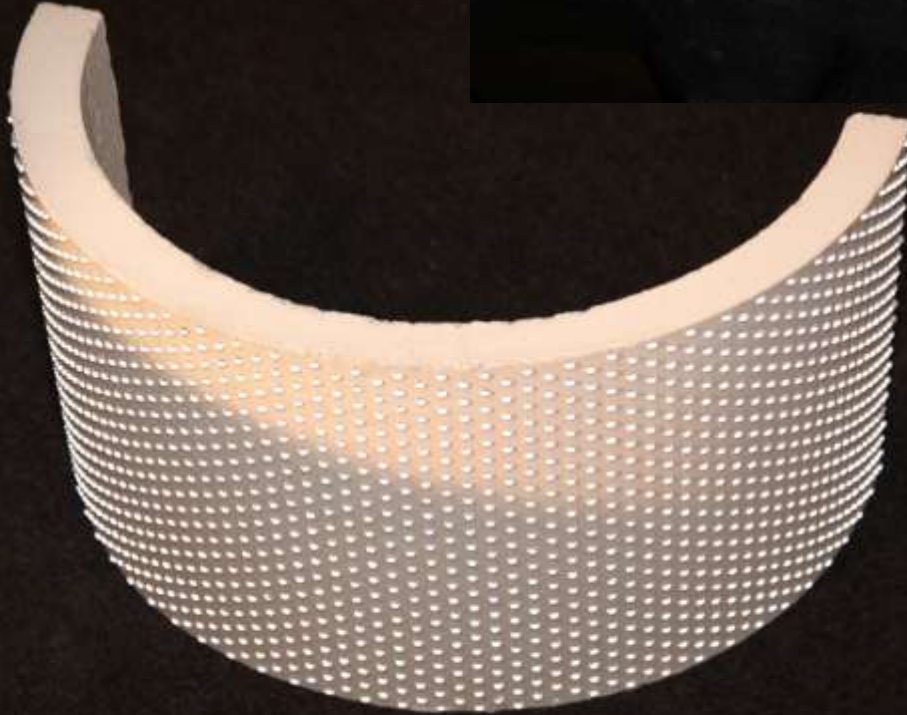
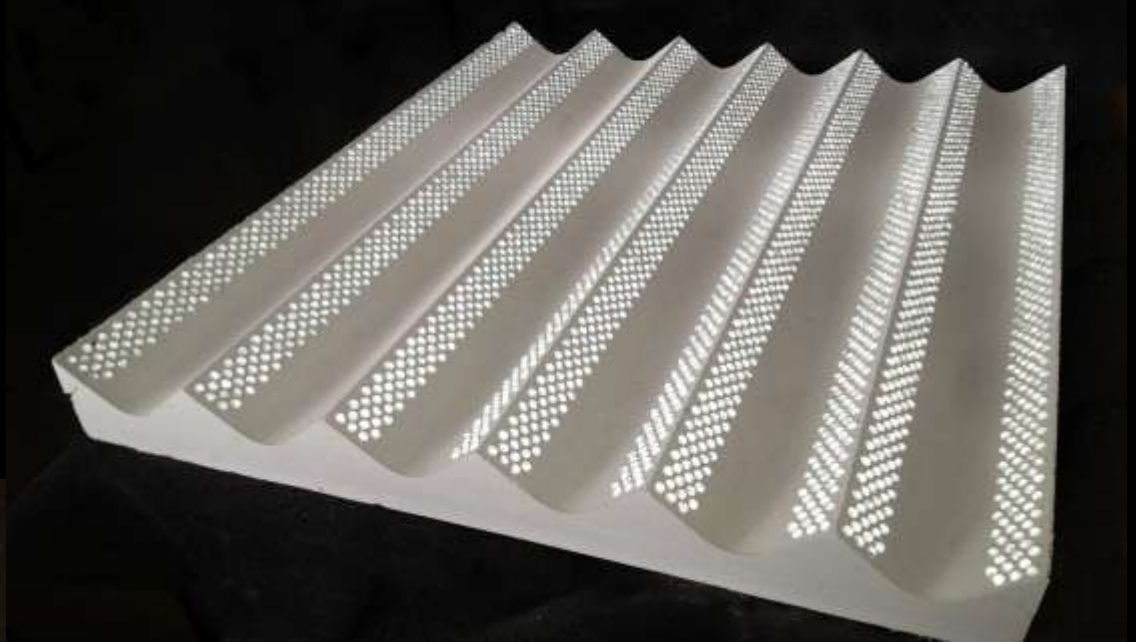






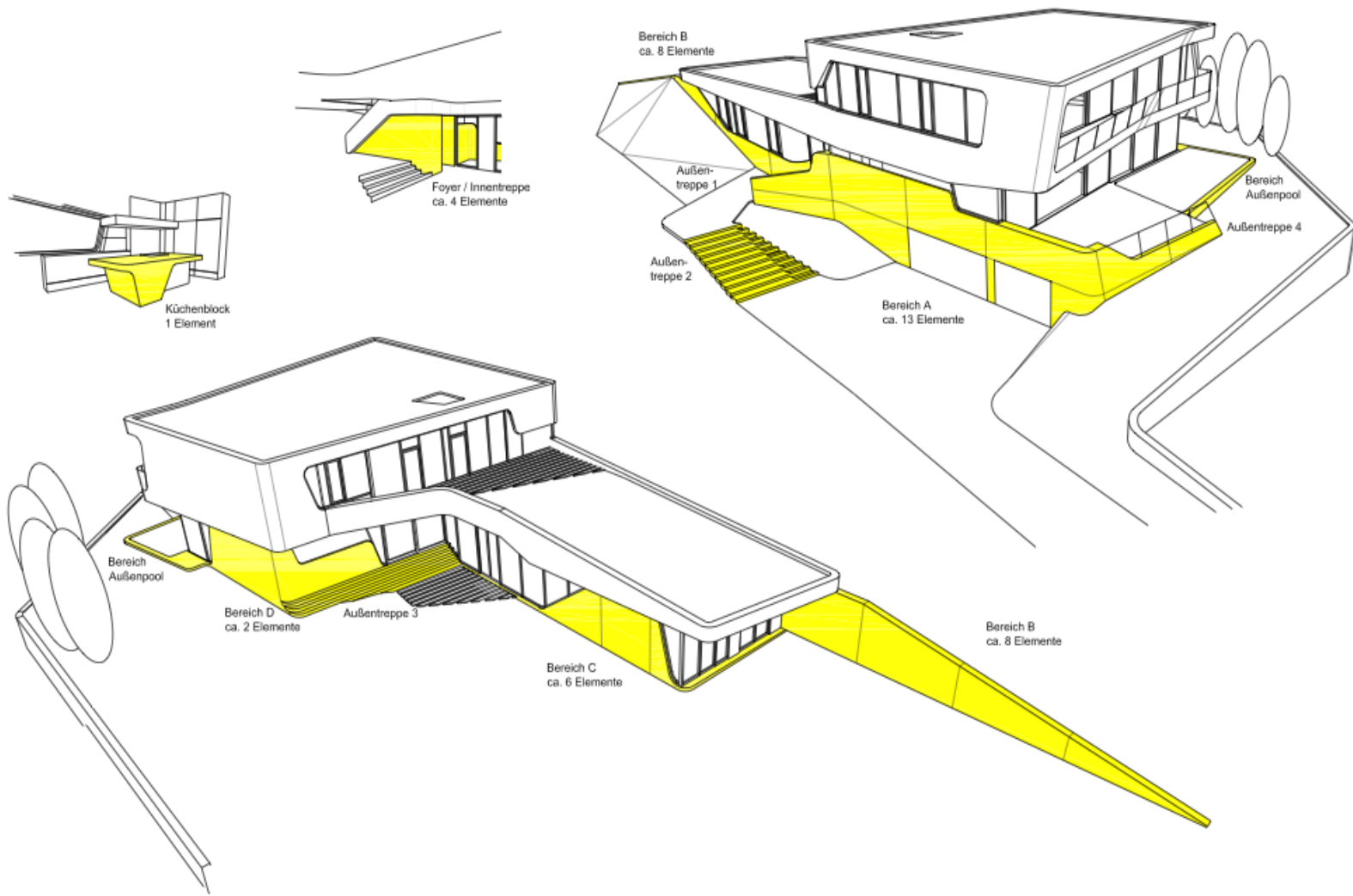


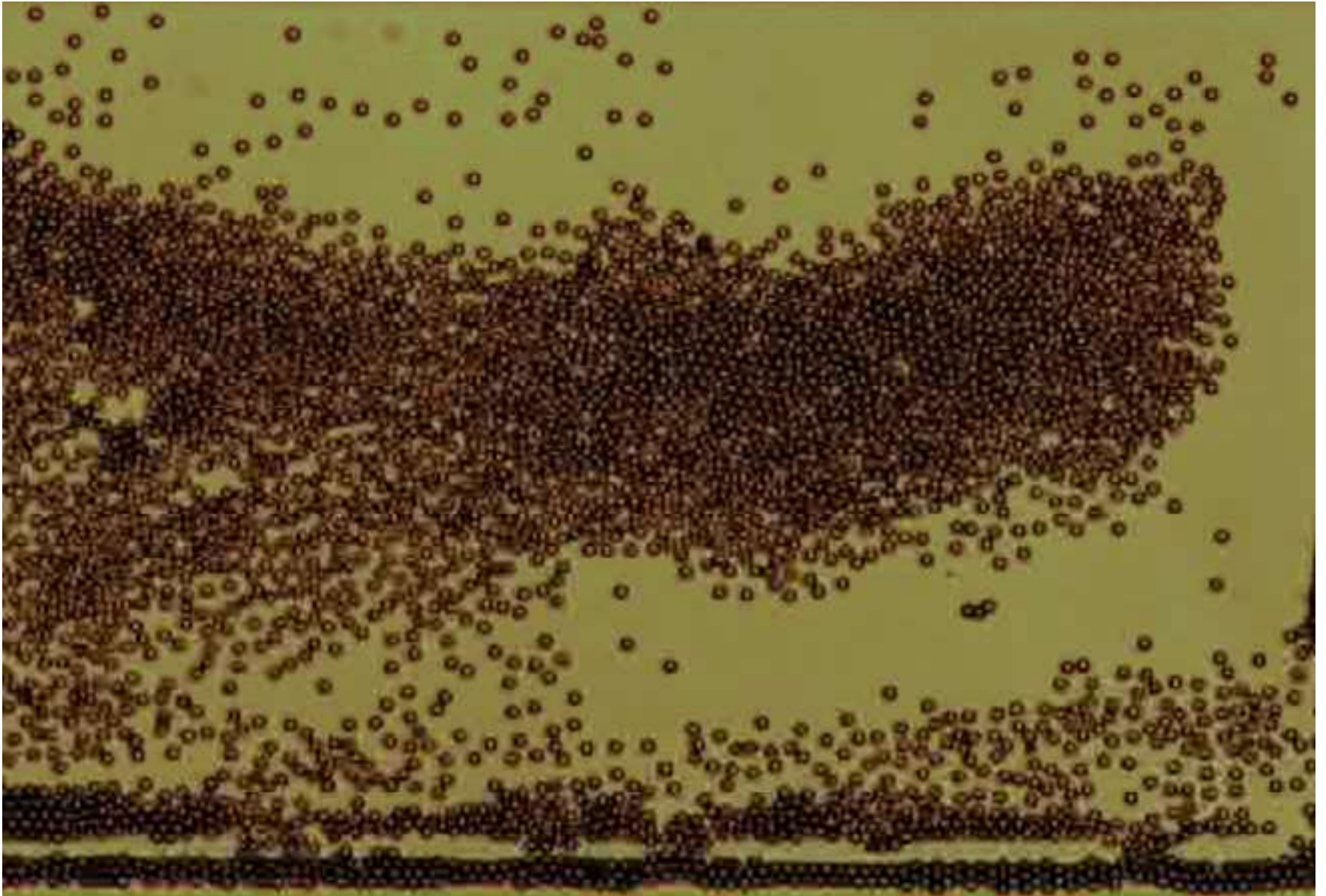




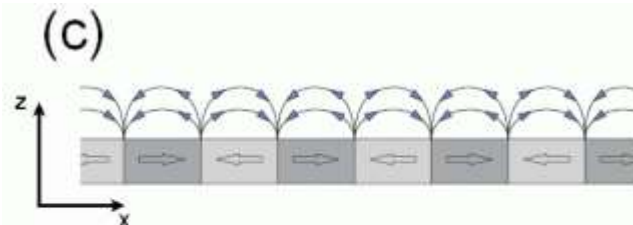
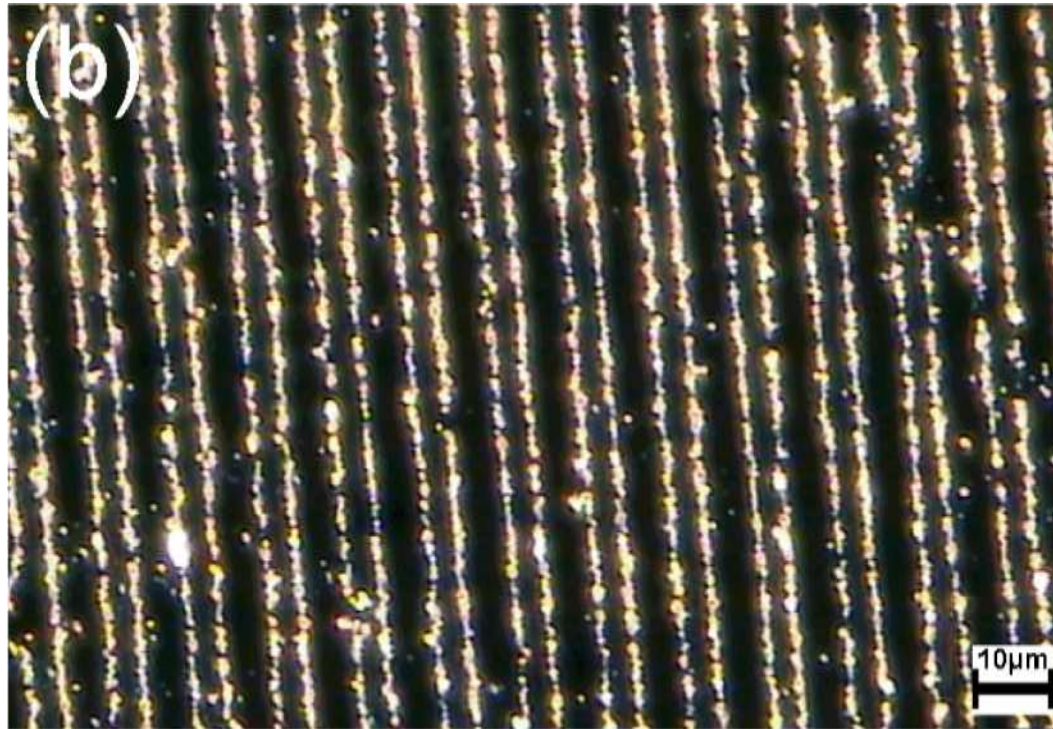
Forschungsplattform
BAU KUNST ERFINDEN
Universität Kassel

Tanja Simonovic
Jan Juraschek
Roman Polster
Thorsten Klooster
Heike Klussmann





Film © Thomas Fischer, TU Bayreuth



MAGNETIC PATTERNING OF CONCRETE

Forschungsplattform
BAU KUNST ERFINDEN
Universität Kassel

Jan Juraschek
Pat Taylor
Roman Polster
Thorsten Klooster
Heike Klusmann

FG Experimentelle Physik IV
Universität Kassel

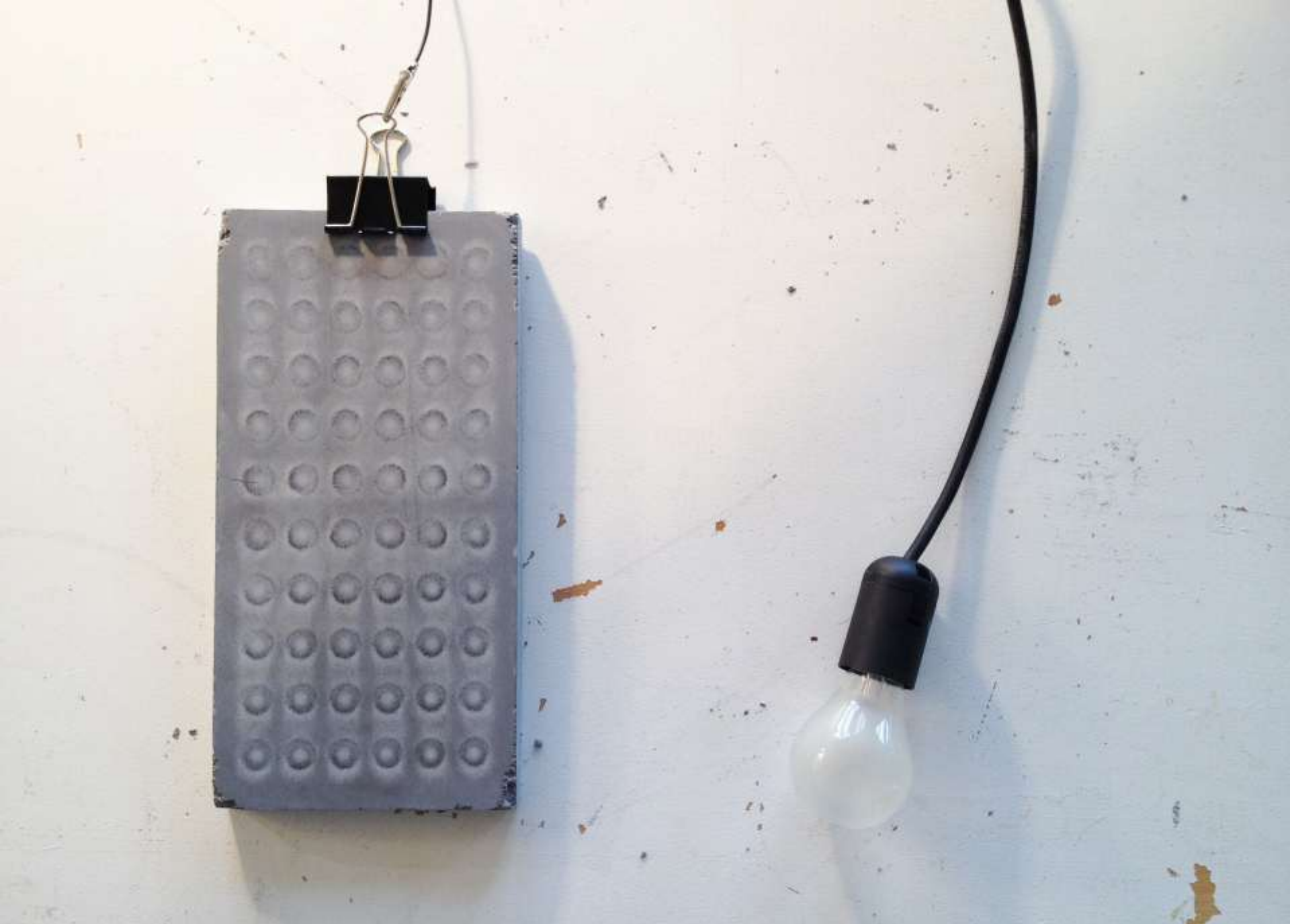
Henning Huckfeld
Arno Ehresmann

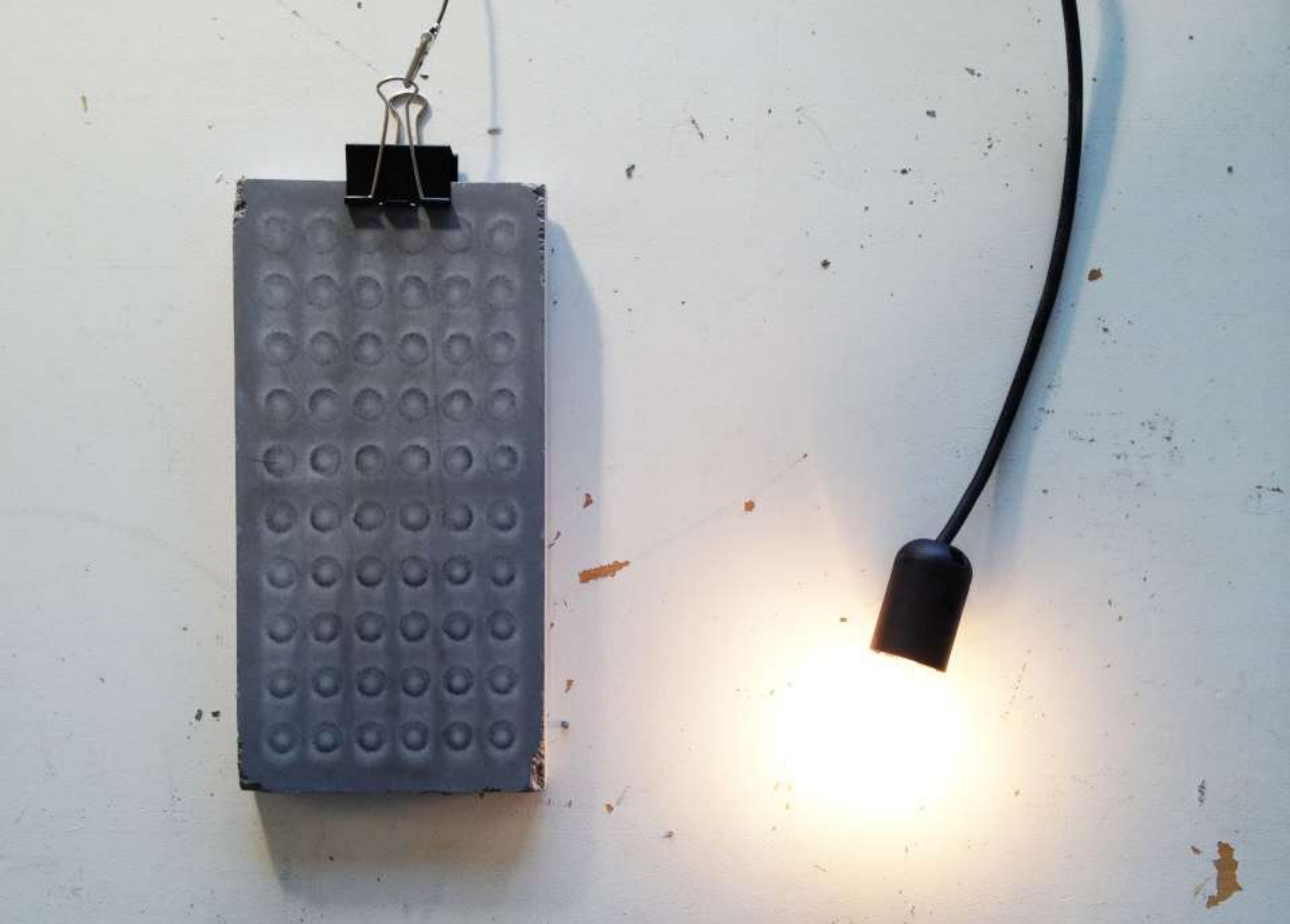












DYSCRETE – SONNENSTROM AUS BETON



Forschungsplattform
BAU KUNST ERFINDEN
Universität Kassel

FG Werkstoffe des Bauwesens
und der Bauchemie
Universität Kassel

Tanja Simonovic
Jan Iwanovicz
Roman Polster
Thorsten Klooster
Heike Klussmann

Nadine Schupke
Johannes Arend
Alexander Wetzel
Bernhard Middendorf





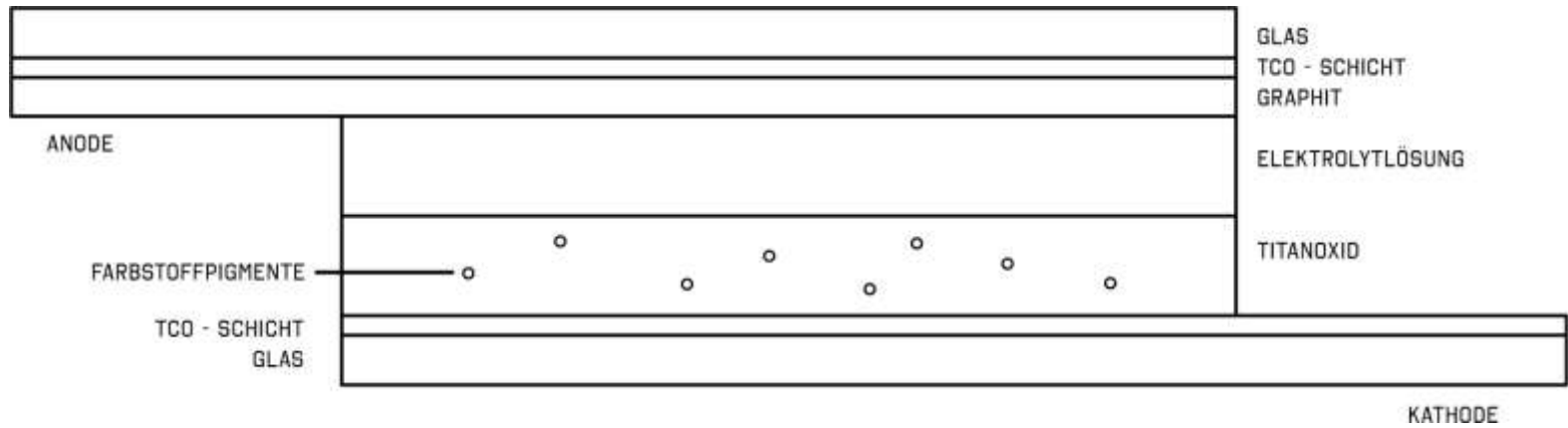






IN
D
M

Small white paper tag with illegible text and a logo.

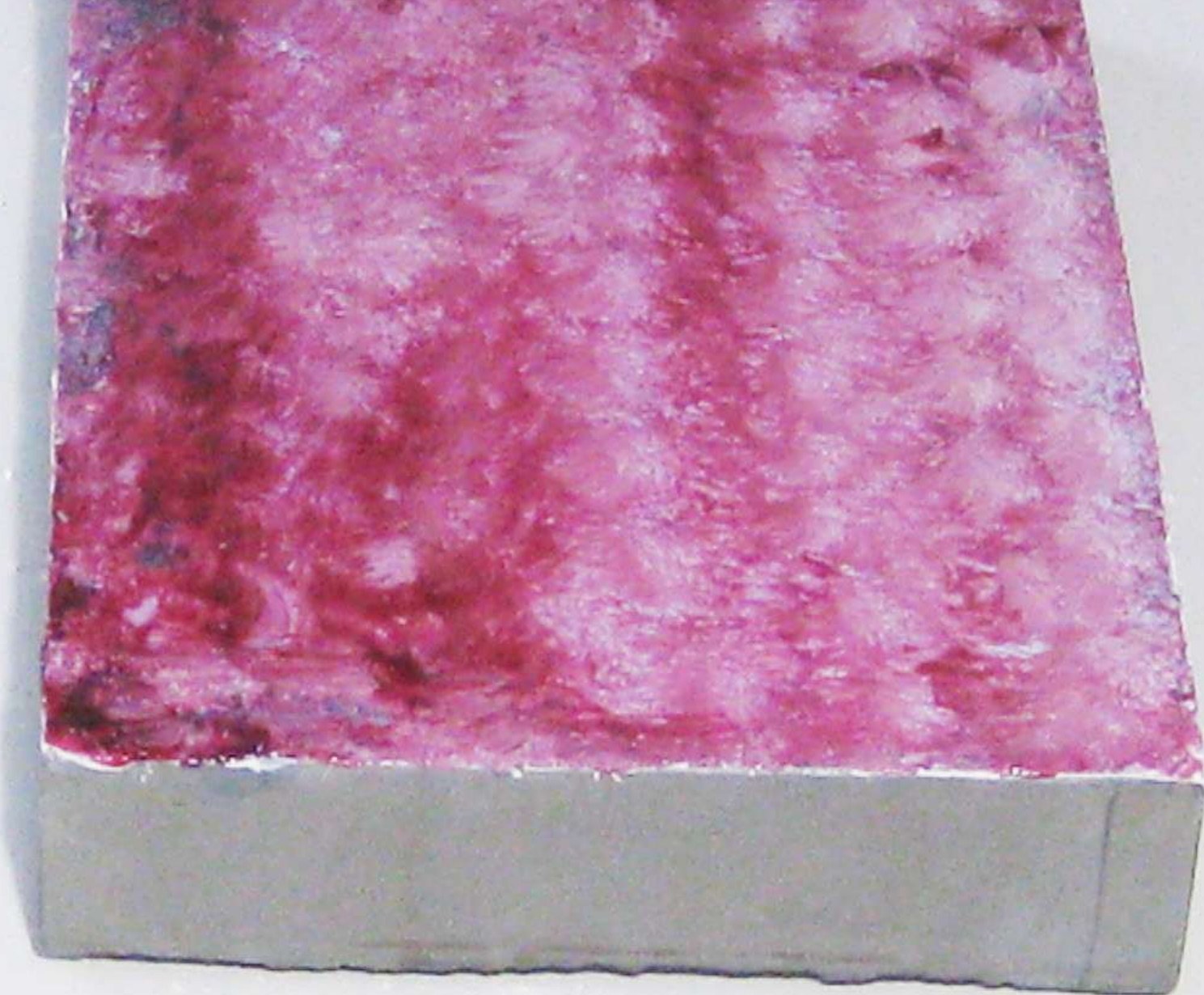




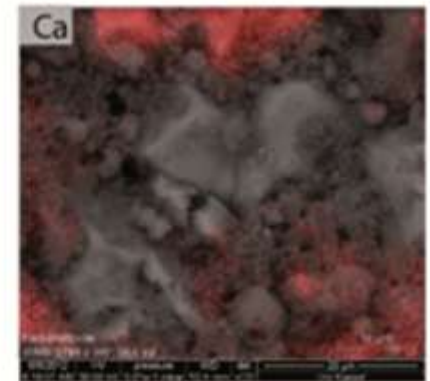
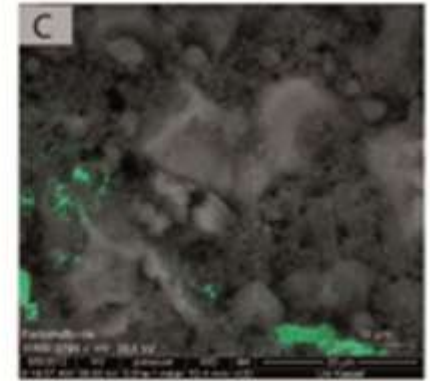
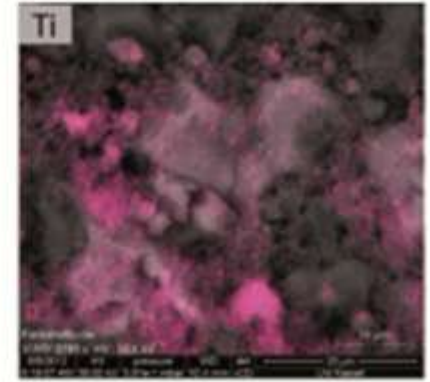
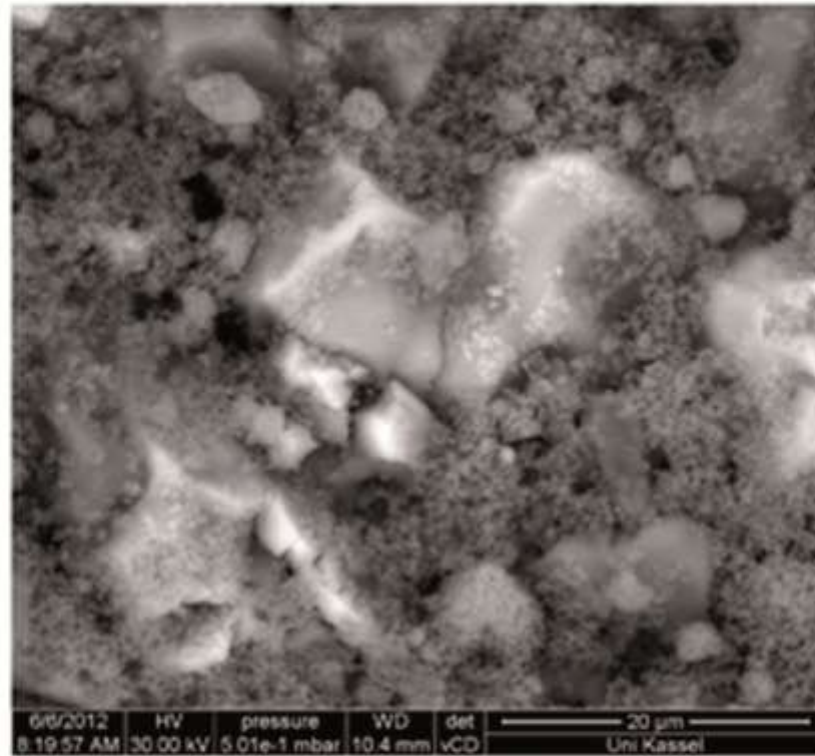
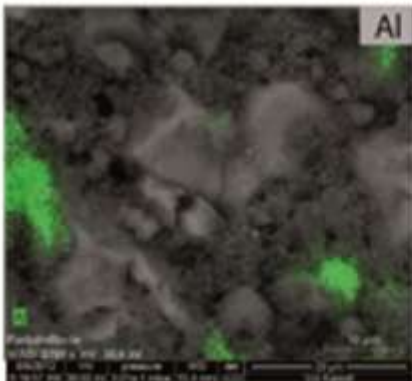
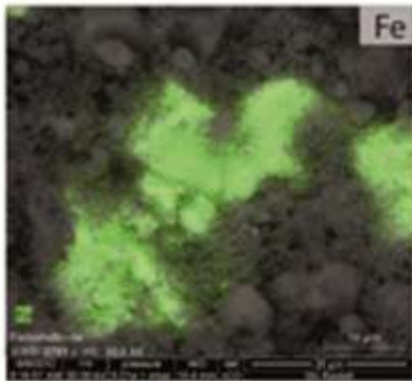
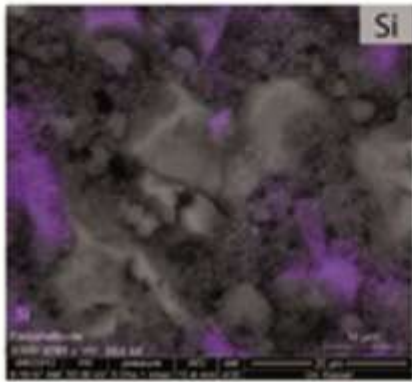
Bau KUNST ERFINDEN



DYSCRETE











BAU KUNST ERFINDEN
DIY LAB

WIR VERFOLGEN
OPEN SOURCE &
HIGHTEC _ LOW BUDGET
STRATEGIEN

BIS JETZT
EIGEN-
HAENDIG
GEBAUT:

CNC FRAESE
REPRAP –
3 D PRINTER
PAPIERSCHOEPF-
ANLAGE
SIEBDRUCK
TIEFZIEHMASCHINE

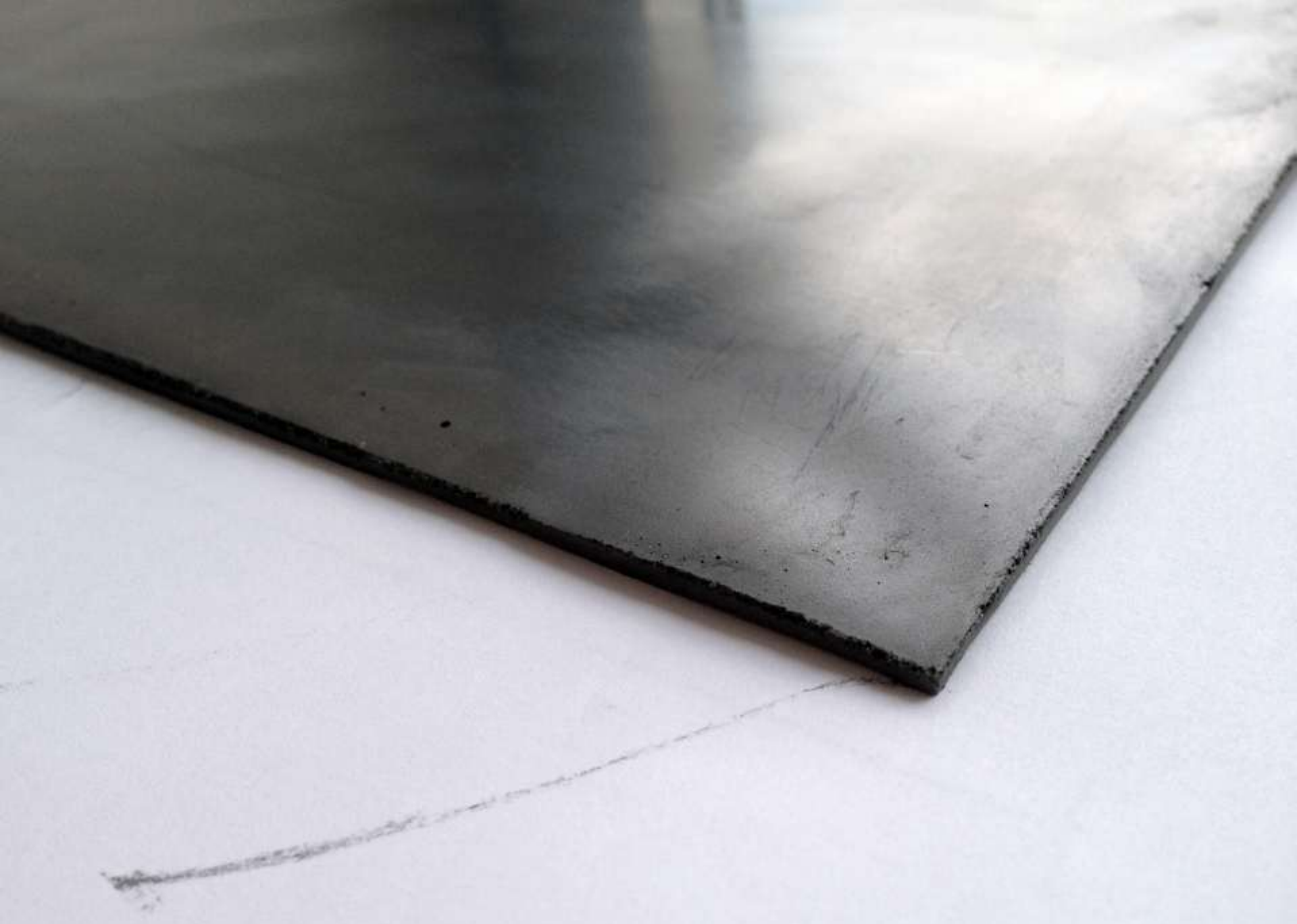
IN ARBEIT

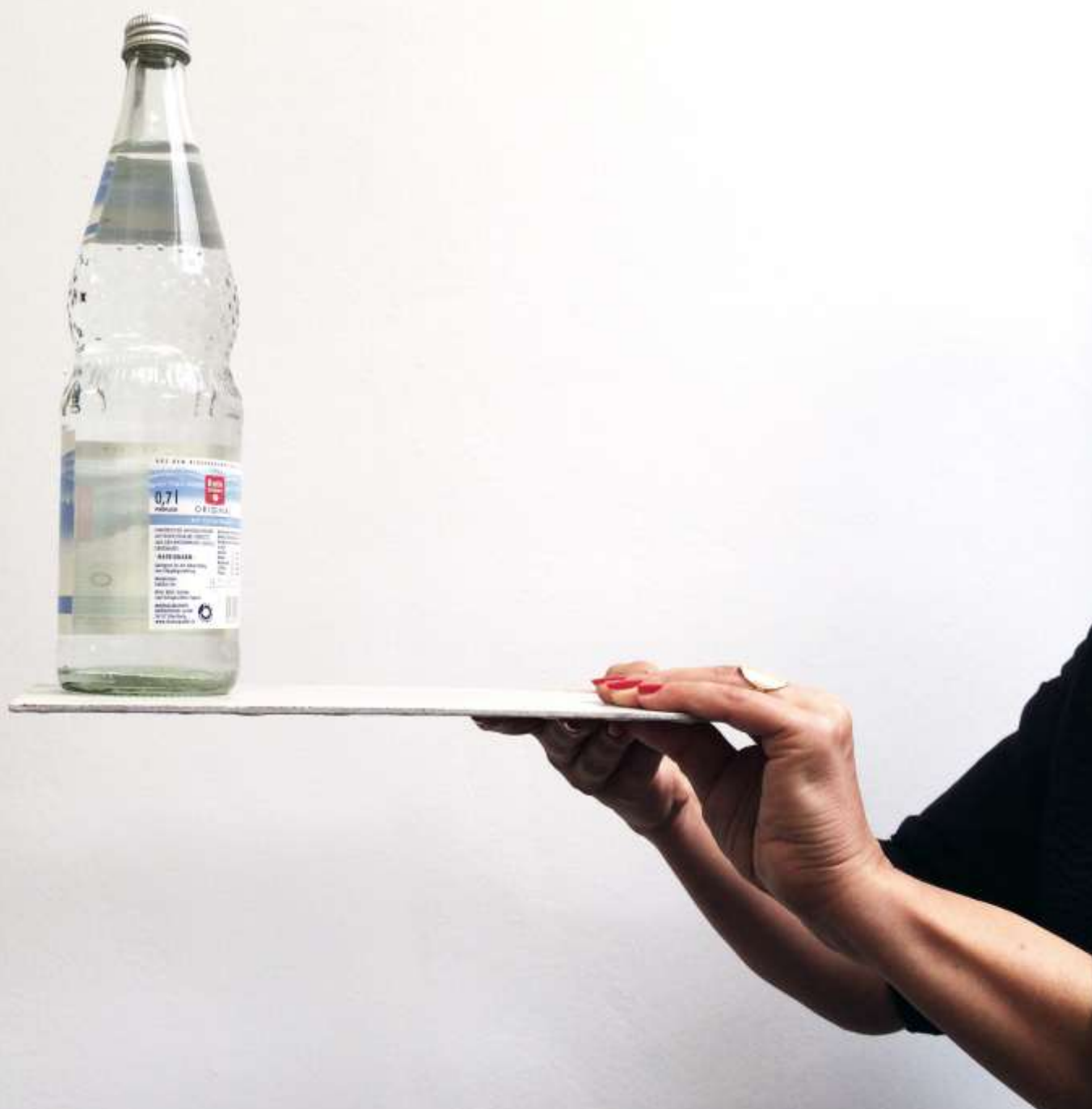
LASER CUTTER
ROBOTER

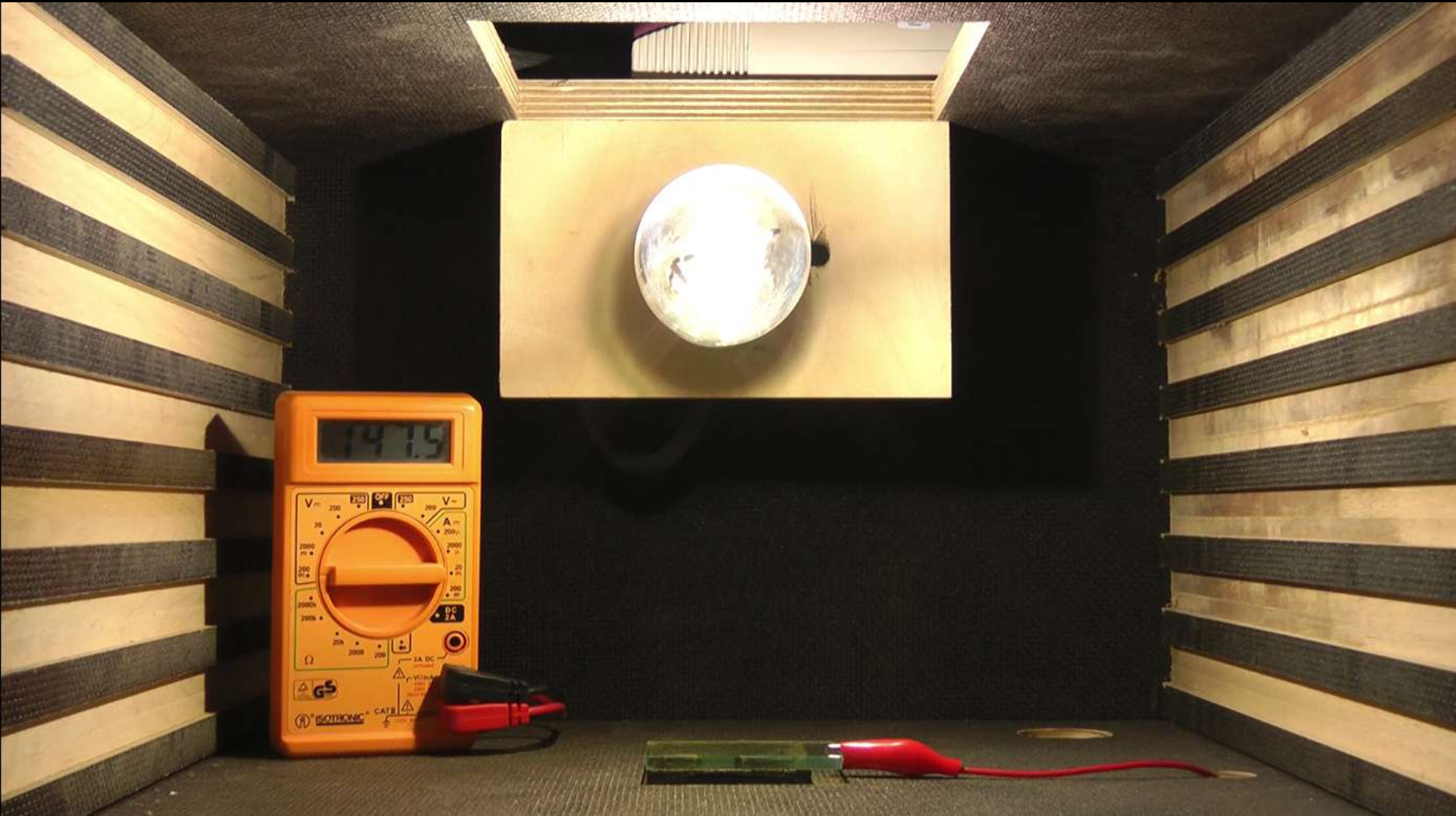


Hessischer
Hochschulpreis
für EXZELLEENZ
in
der
Lehre 17*















Vielen Dank!
www.baukunststerfinden.org