

**[WWW.ATELIERKEMPETHILL.COM](http://WWW.ATELIERKEMPETHILL.COM)**



## **ATELIER KEMPE THILL – DIE SUCHE NACH DEM OBJEKTIVEN GRUNDRISS**

**KONGRESS “ARCHITEKTURQUALITÄT IM KOSTENGÜNSTIGEN WOHNUNGSBAU”  
AXICA KONGRESS- UND TAGUNGSZENTRUM BERLIN, 16. APRIL 2015**

**ARCHITEKTUR**

**=**

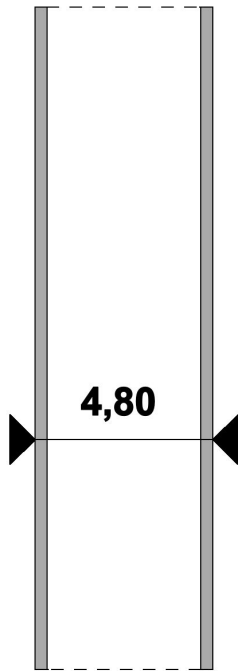
**INFRASTRUKTUR**

**PROTOTYP**

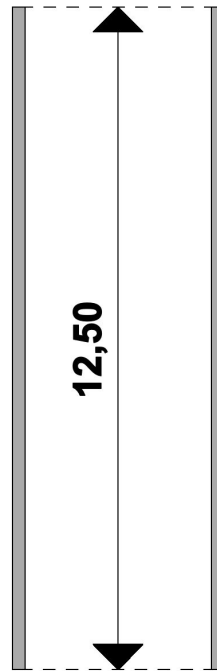
**=**

**ARCHITEKTUR ALS  
OPTIMIERTES PRODUKT**

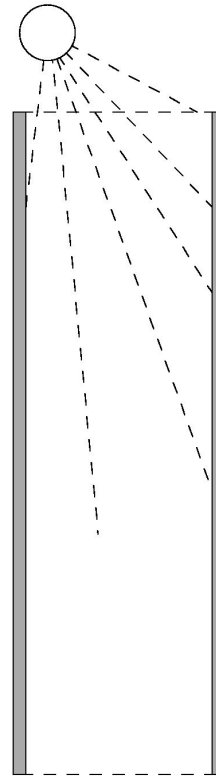
# REIHENHÄUSER



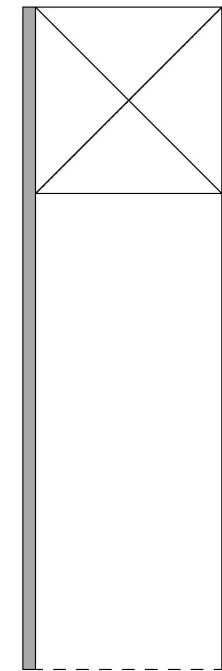
**1. SMALL SPAN**  
to reduce facade  
surface



**2. DEEP PLAN**  
to produce "cheap  
square meters"



**3. GLASS FACADE**  
to bring in enough  
light and extend the inside  
space towards the  
outside



**4. VOID SPACE**  
to create spatial  
richness and hierarchy

**COMPACTNESS: ECONOMY = ECOLOGY**

# **23 DRIVE-IN WONINGEN AMSTERDAM**

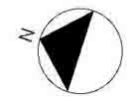
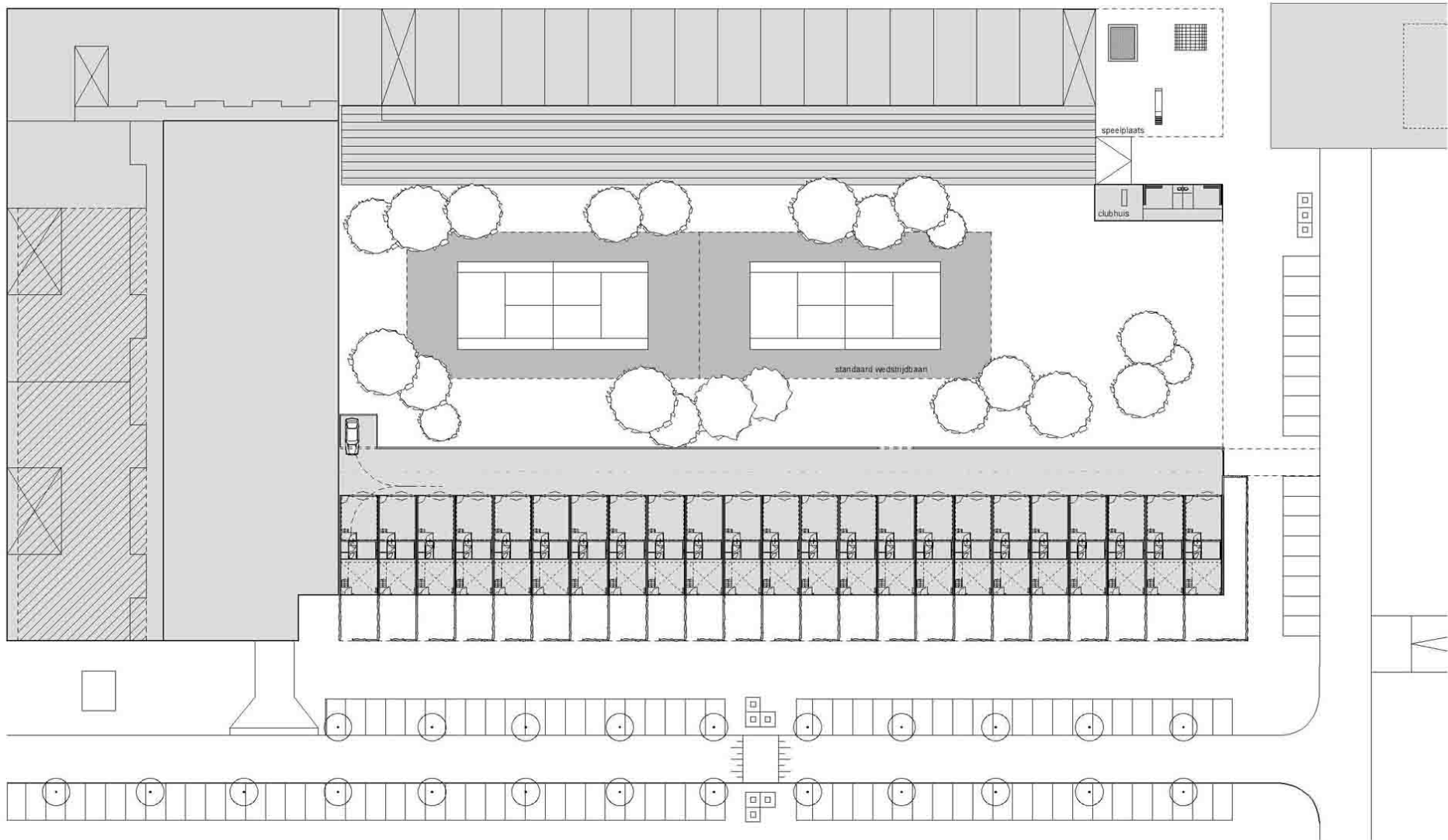
**BUDGET: 850 EURO/M2**

**TYPE: FREE MARKET**

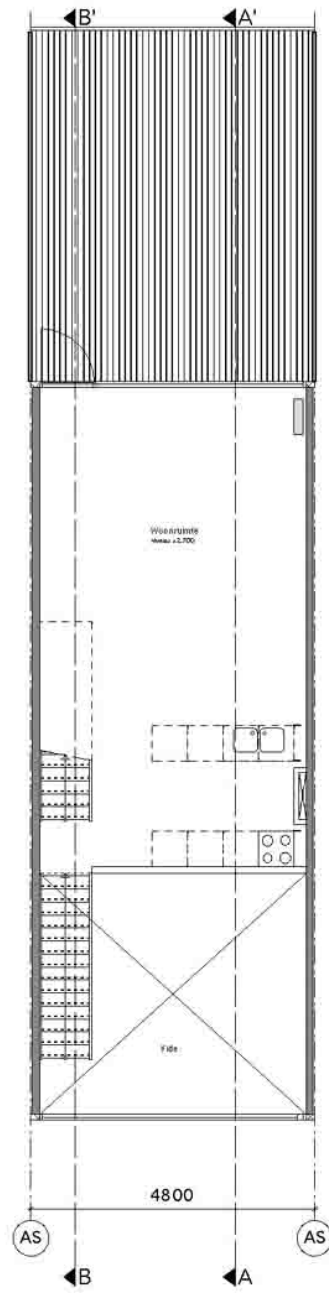
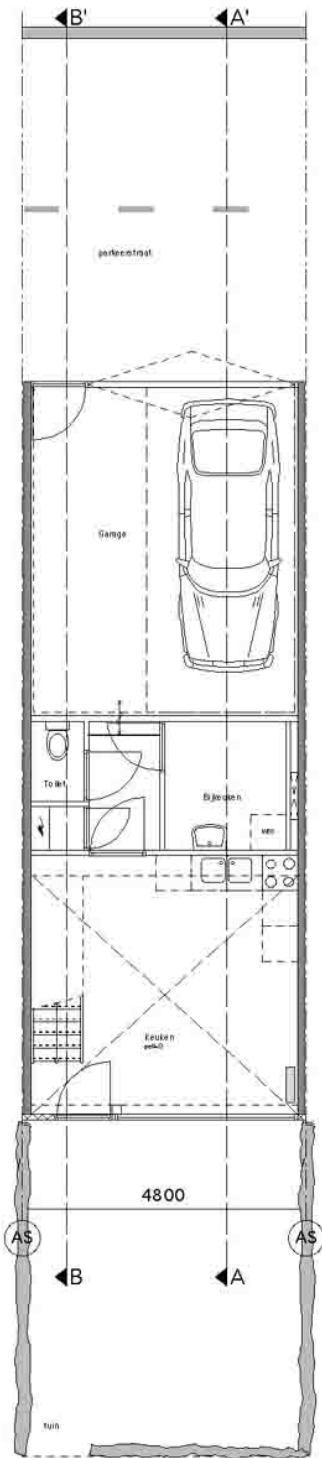
**CLIENT: DELTAFORTE A'DAM**



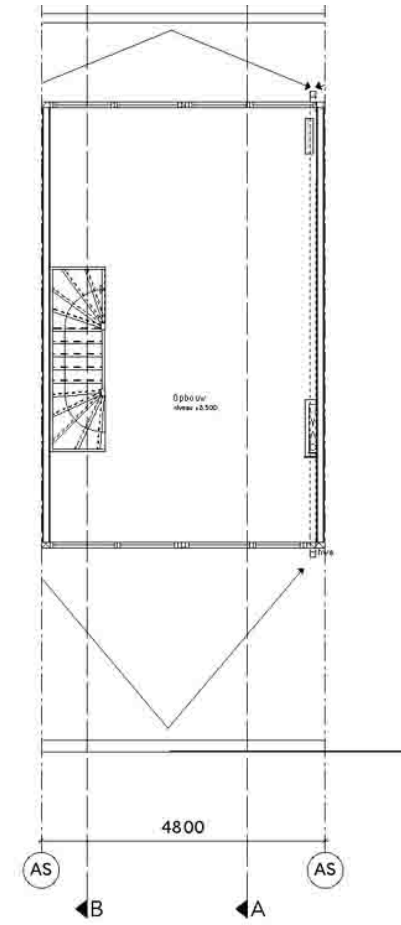
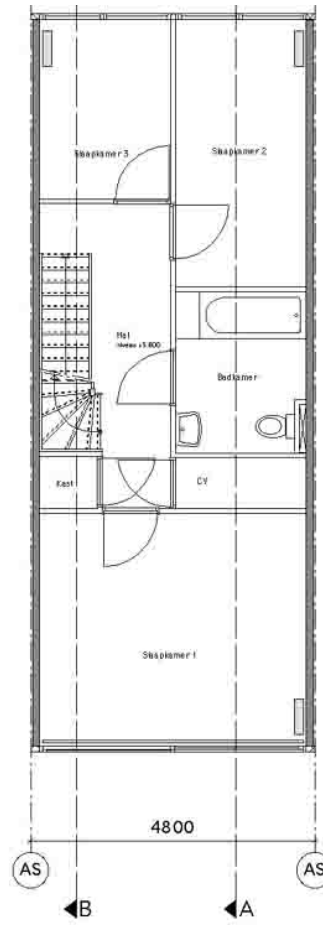








GBO		
laag 1	28,2m <sup>2</sup>	parkeren 25,0m <sup>2</sup>
laag 2	37,0m <sup>2</sup>	
laag 3	55,4m <sup>2</sup>	
	120,6m <sup>2</sup>	
laag 4	33,1m <sup>2</sup>	
	153,7m <sup>2</sup>	















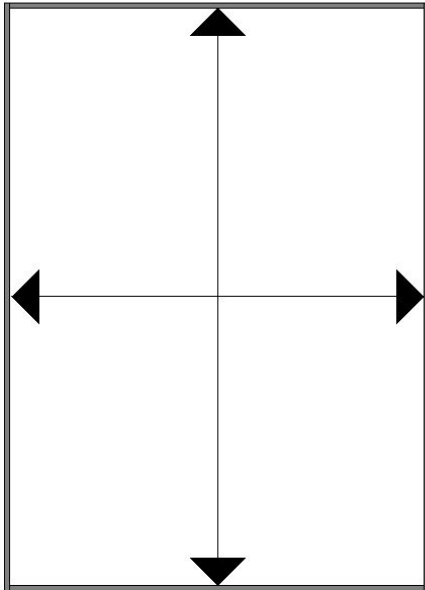






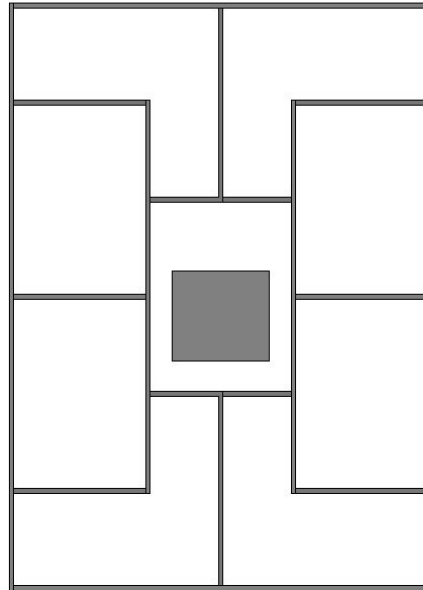


# KOMPAKTE BLOCKS



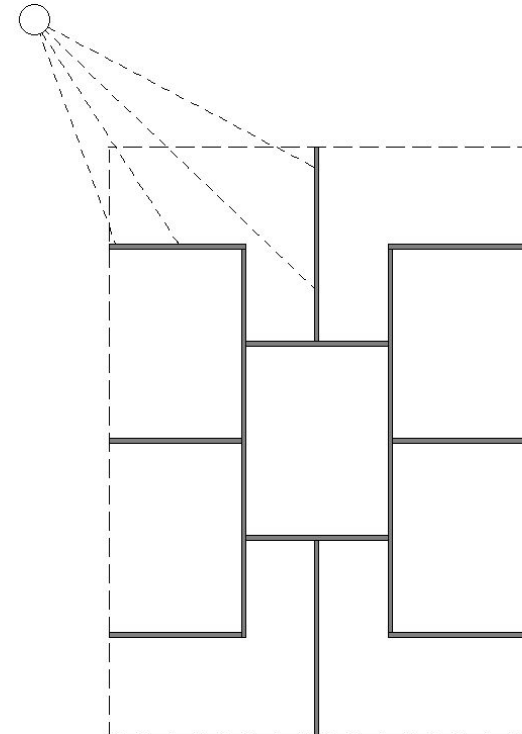
### 1. COMPACT VOLUME

Een diep blok om een compact volume te realiseren en het gevel oppervlak te minimaliseren



### 2. BREDE WONING

Eenzijdig georiënteerde brede woningen met flexible plattegronden



### 3. GLAZEN GEVEL

Een seriematige glazen gevel voor veel licht en uitzicht. Gevel relativerend de compactheid van het blok

# **64 WONINGEN ZWOLLE**

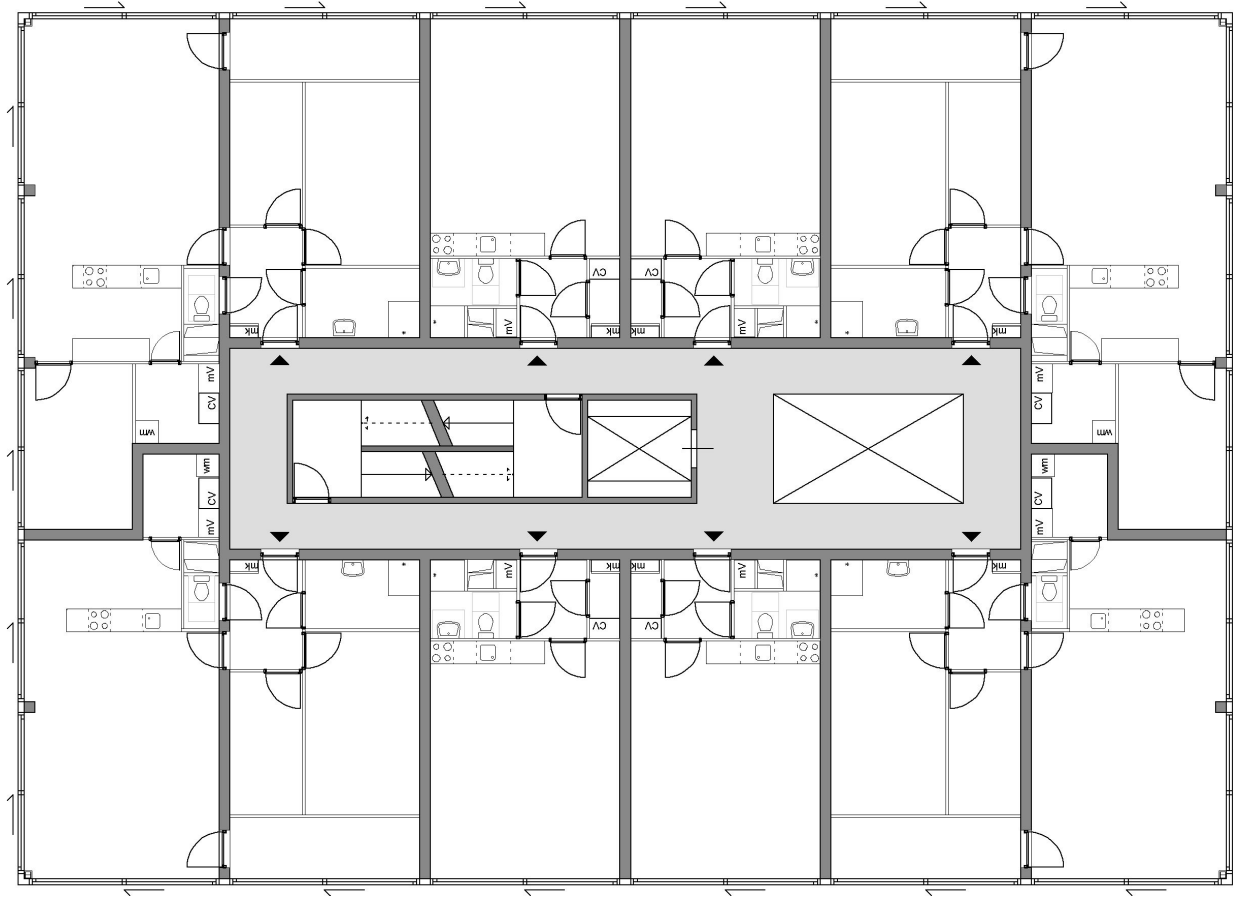
**BUDGET: 800 EURO/M2**

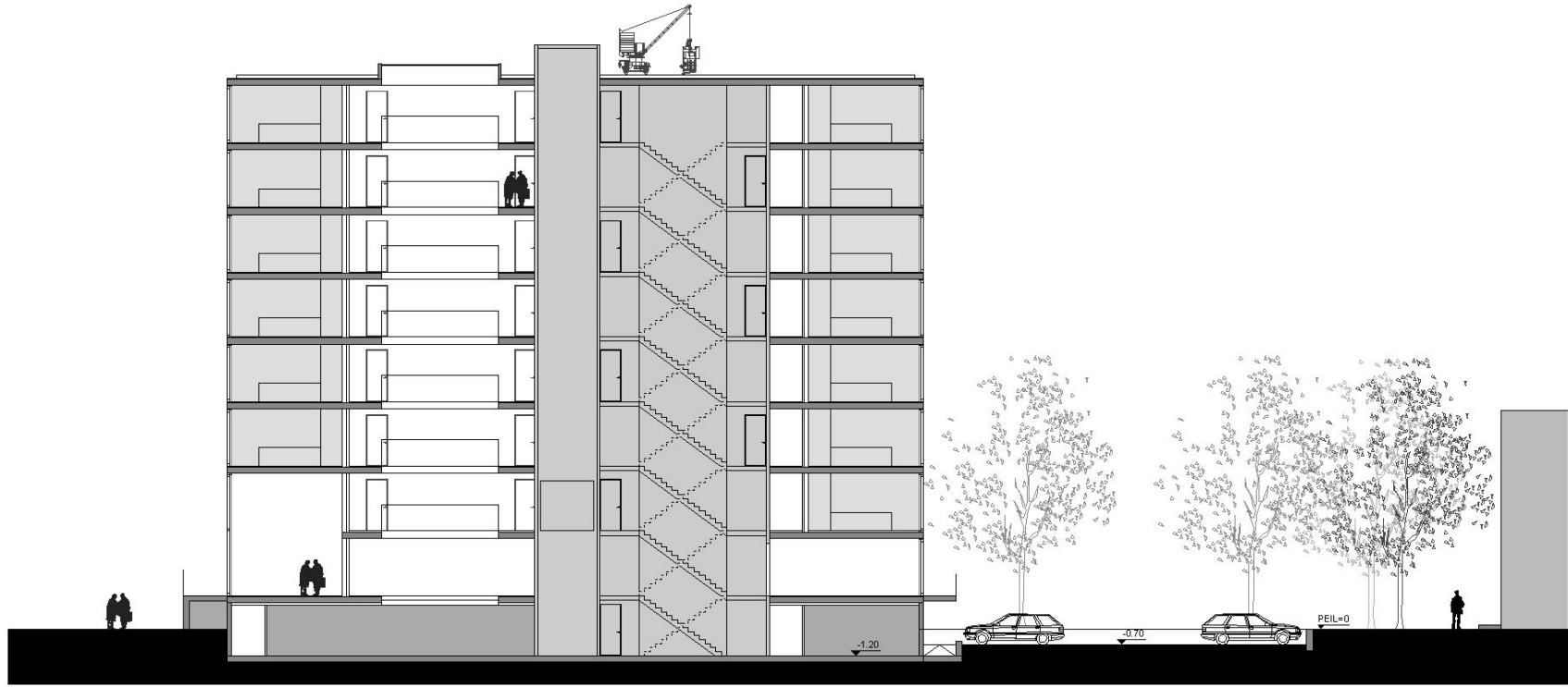
**TYPE: SOCIAL HOUSING / STUDENT HOUSING**

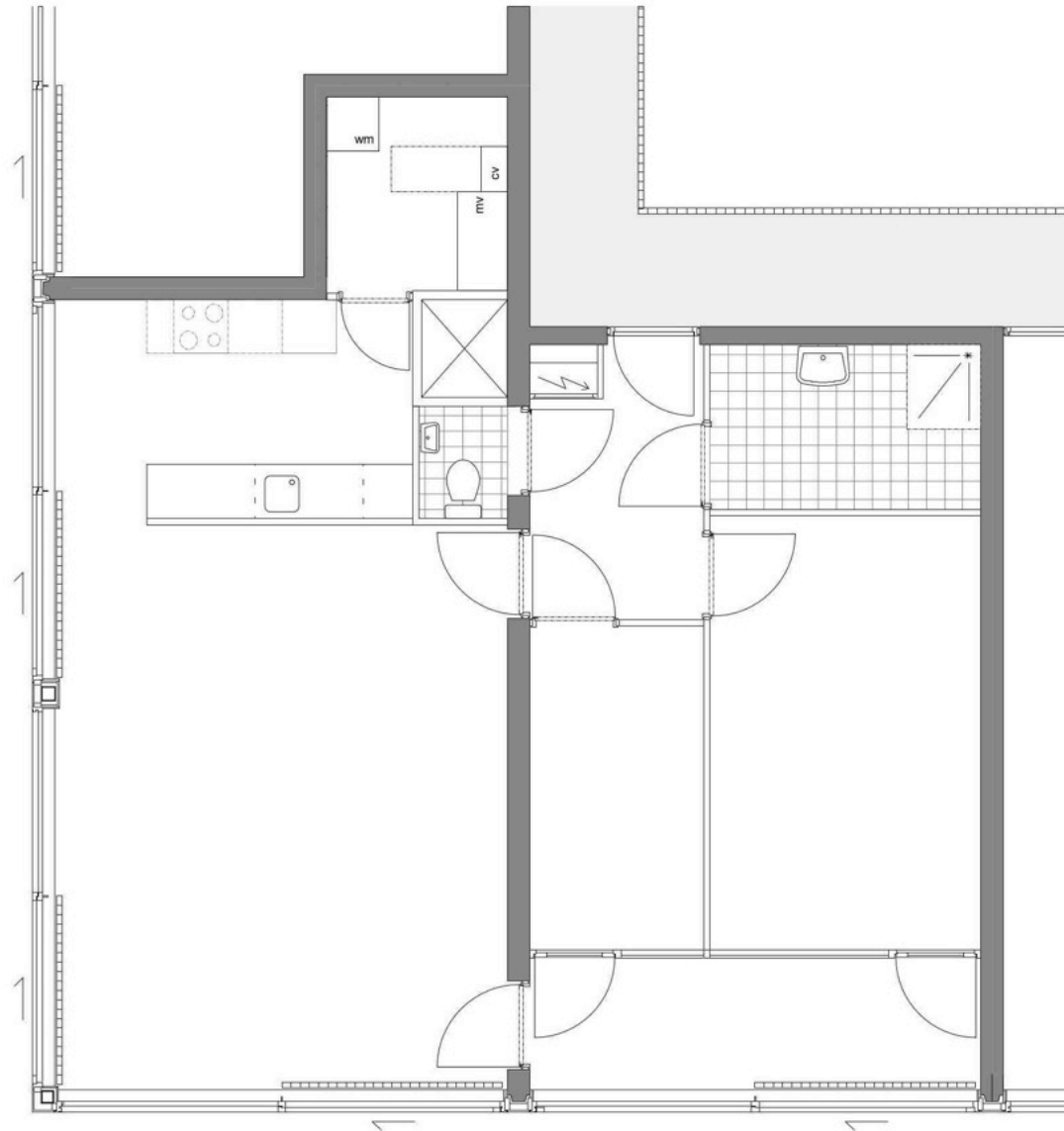
**CLIENT: HOLTENBROEK1 VOF**



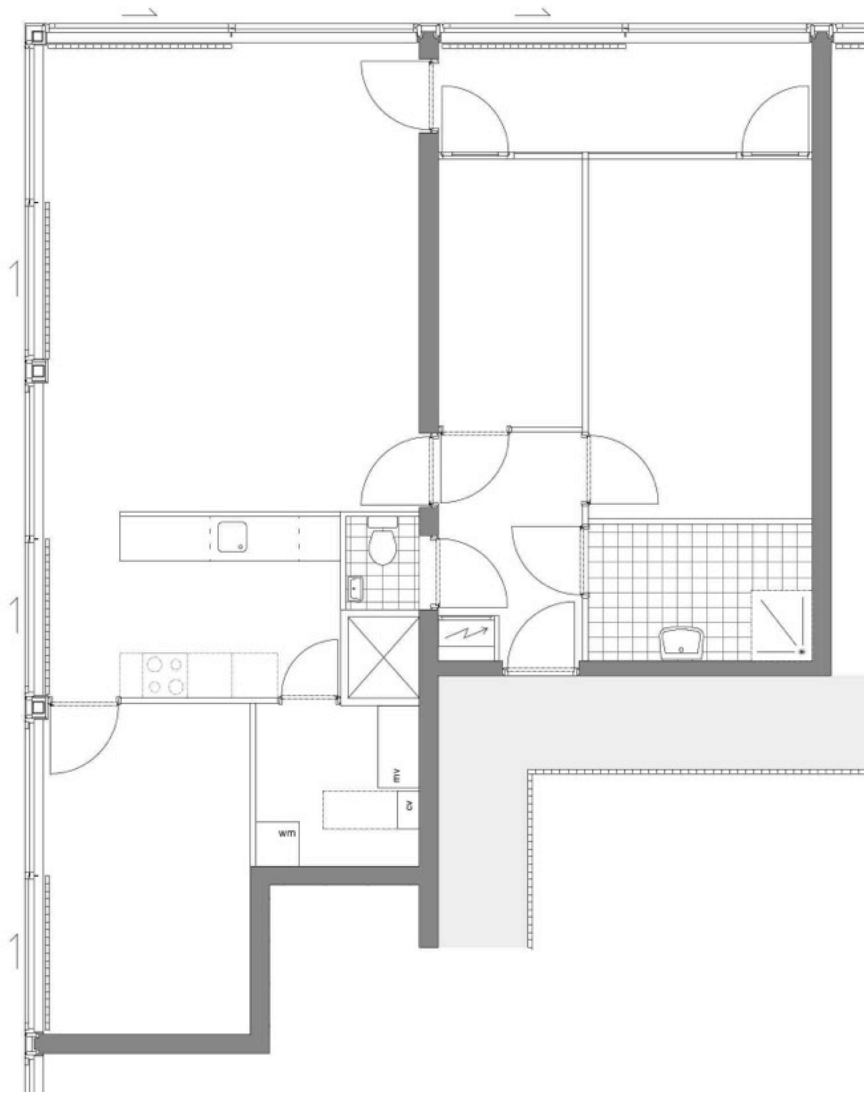




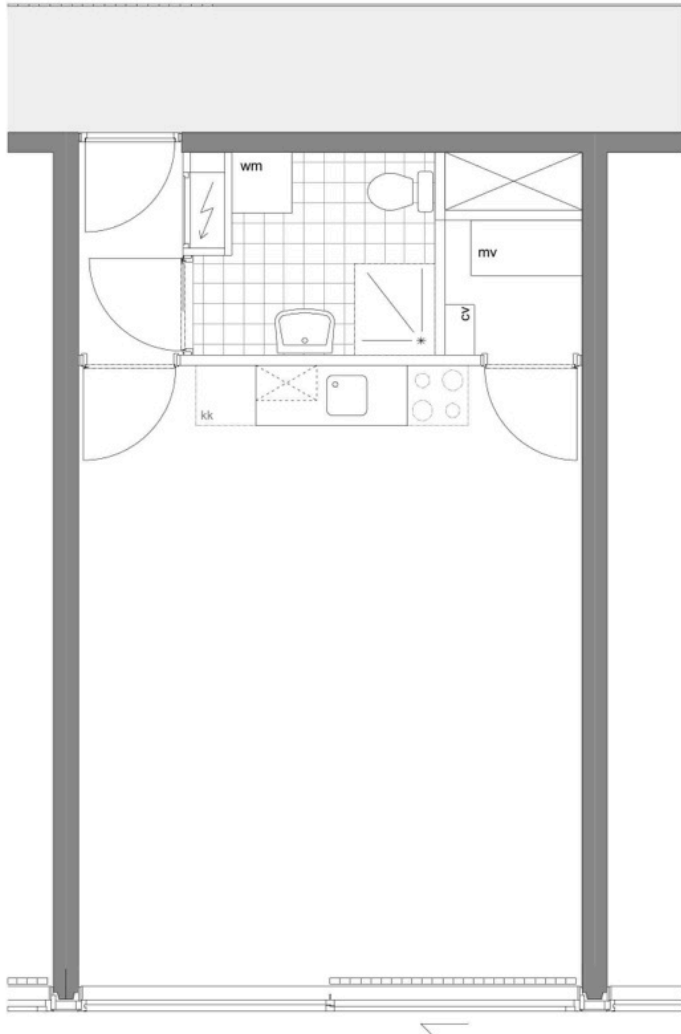




**APP 1, SU 95 m<sup>2</sup>**



**APP 2, SU 83 m2**



APP 3, SU 40 m2

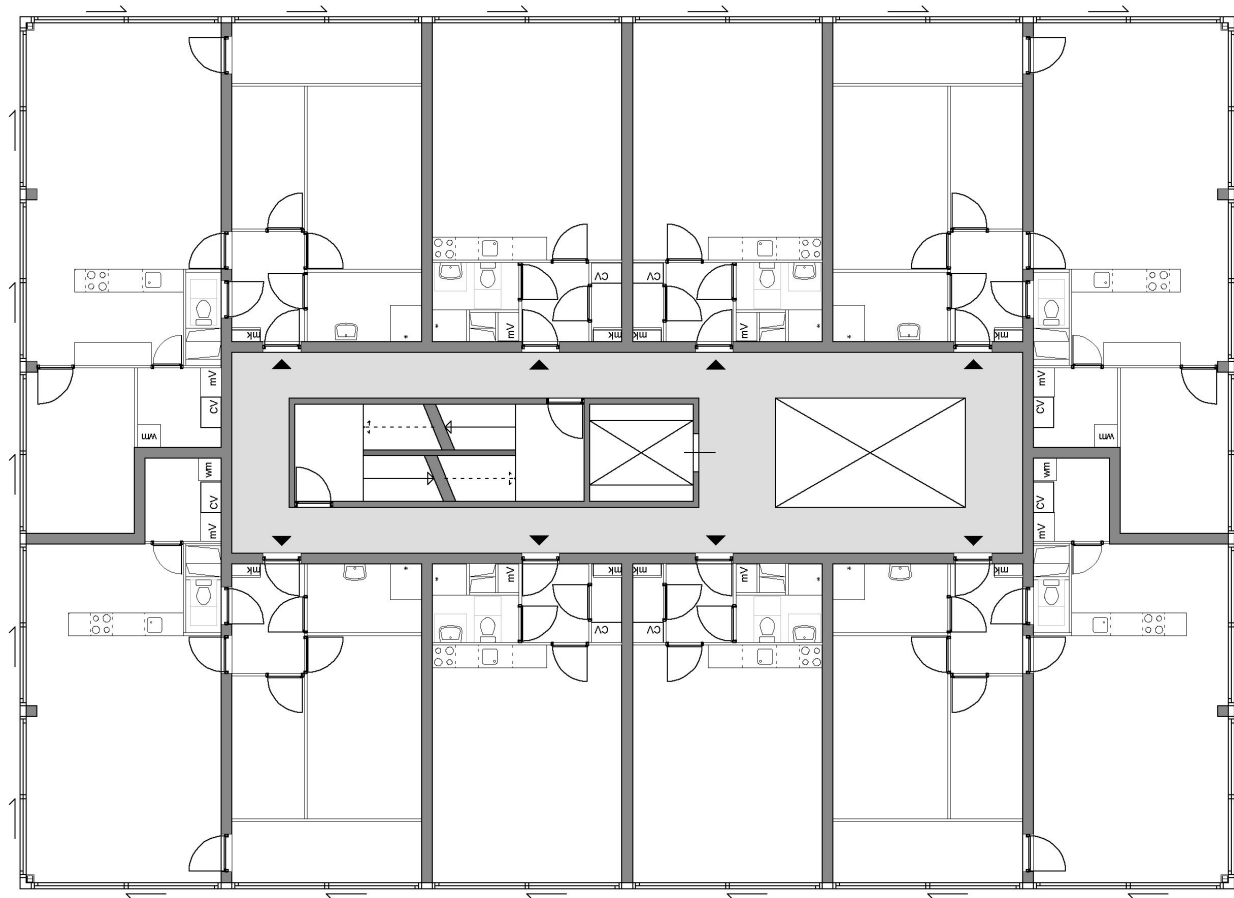








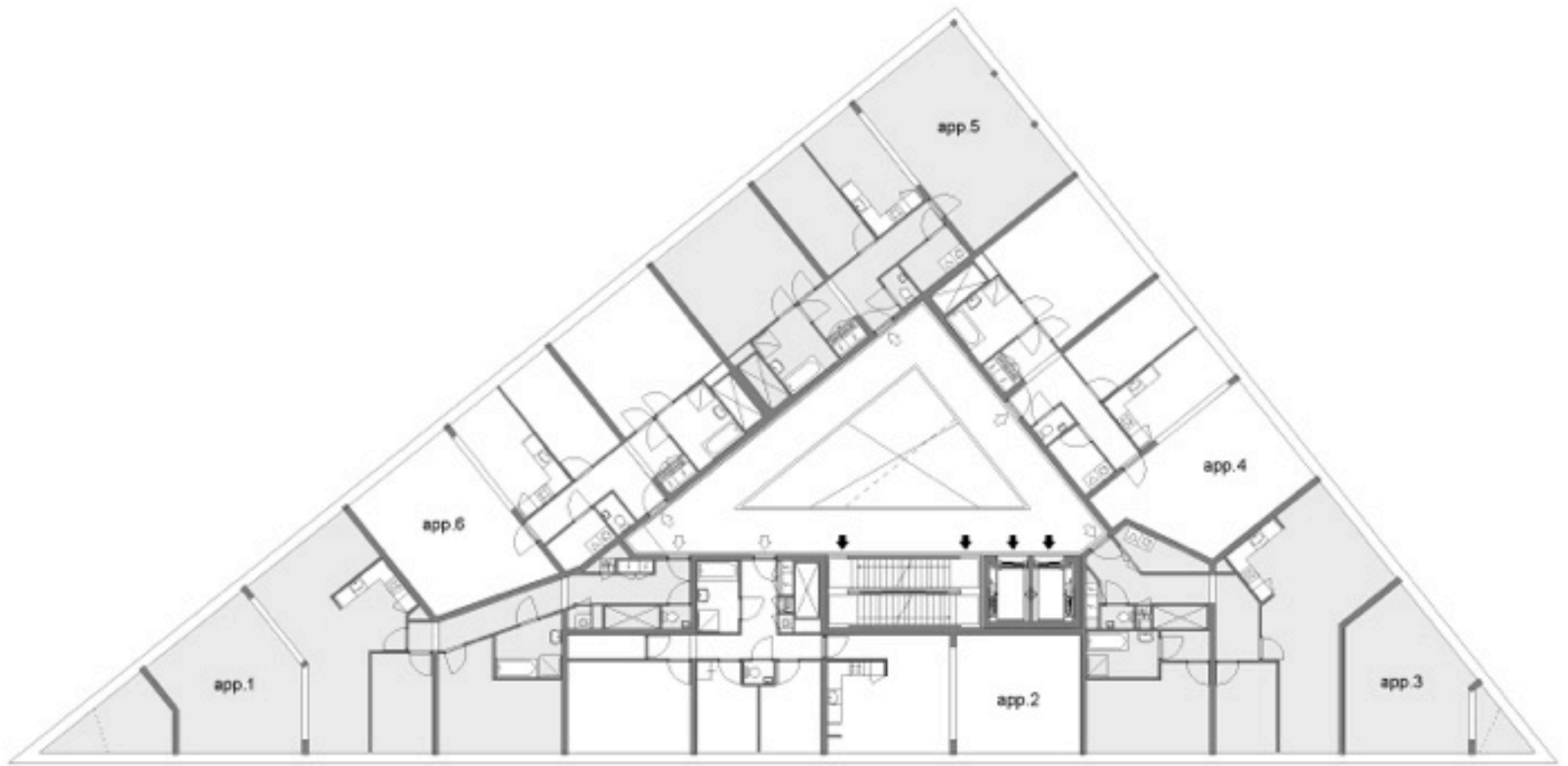




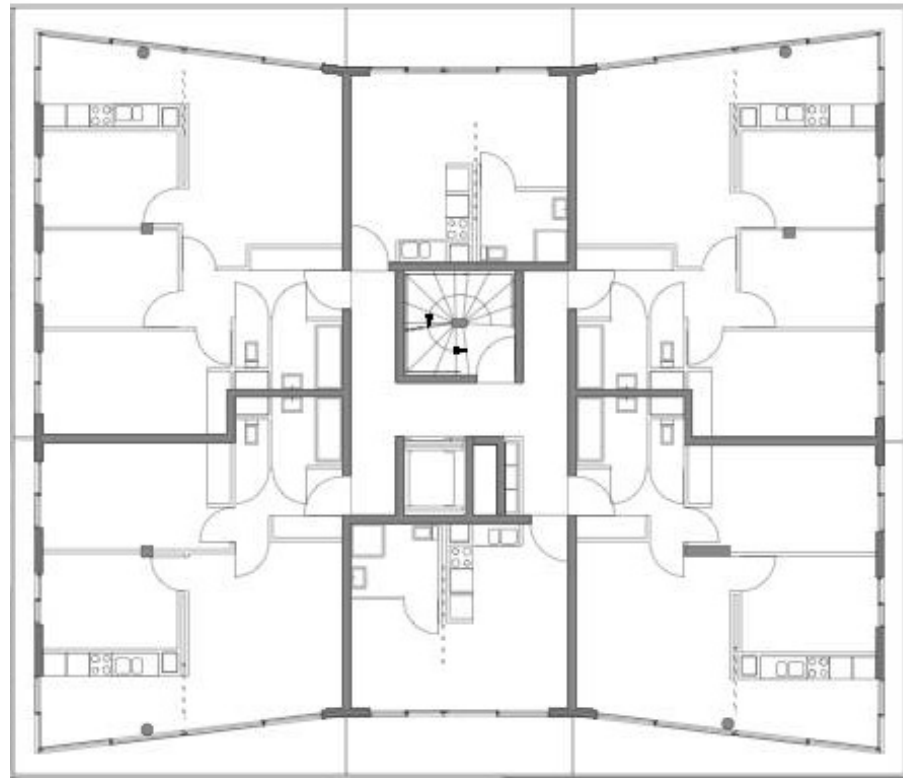
ZWOLLE



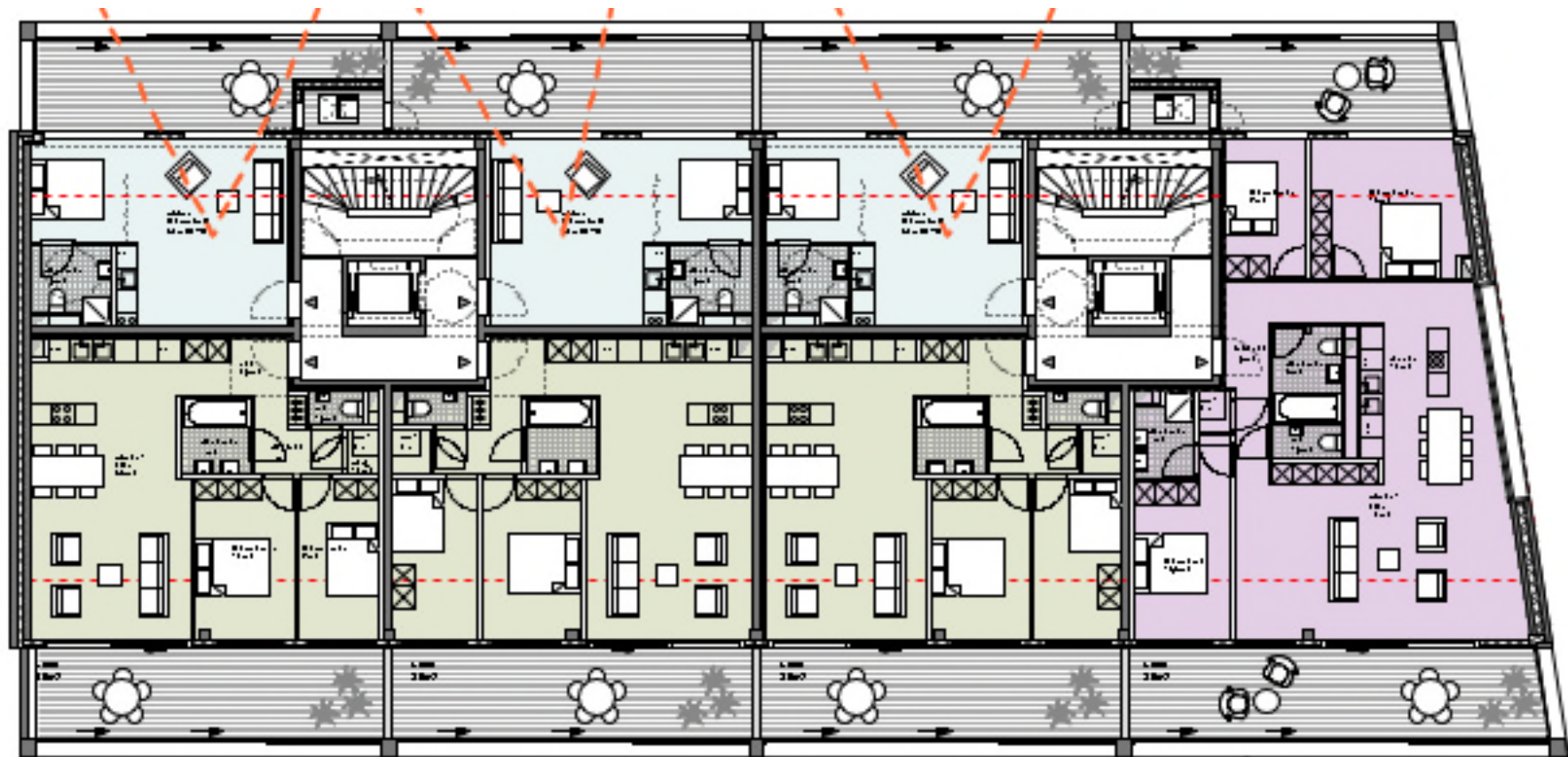
ROTTERDAM SCHIEBROEK



ALMERE



PARIS MONTMARTRE



ANTWERPEN NIEUW ZUID

## **WIE SOLLTEN WOHNUNGEN SEIN?**

**1. GROSS BEI GERINGEM PREIS.**

**2. IN HOHEM MASS VERGLAST**

**3. KOMPAKT**

**4. RATIONELL UND SYSTMATISCH ENTWORFEN**

**(BESTES PREIS – LEISTUNGSVERHÄLTNIS)**

**DANKE!**